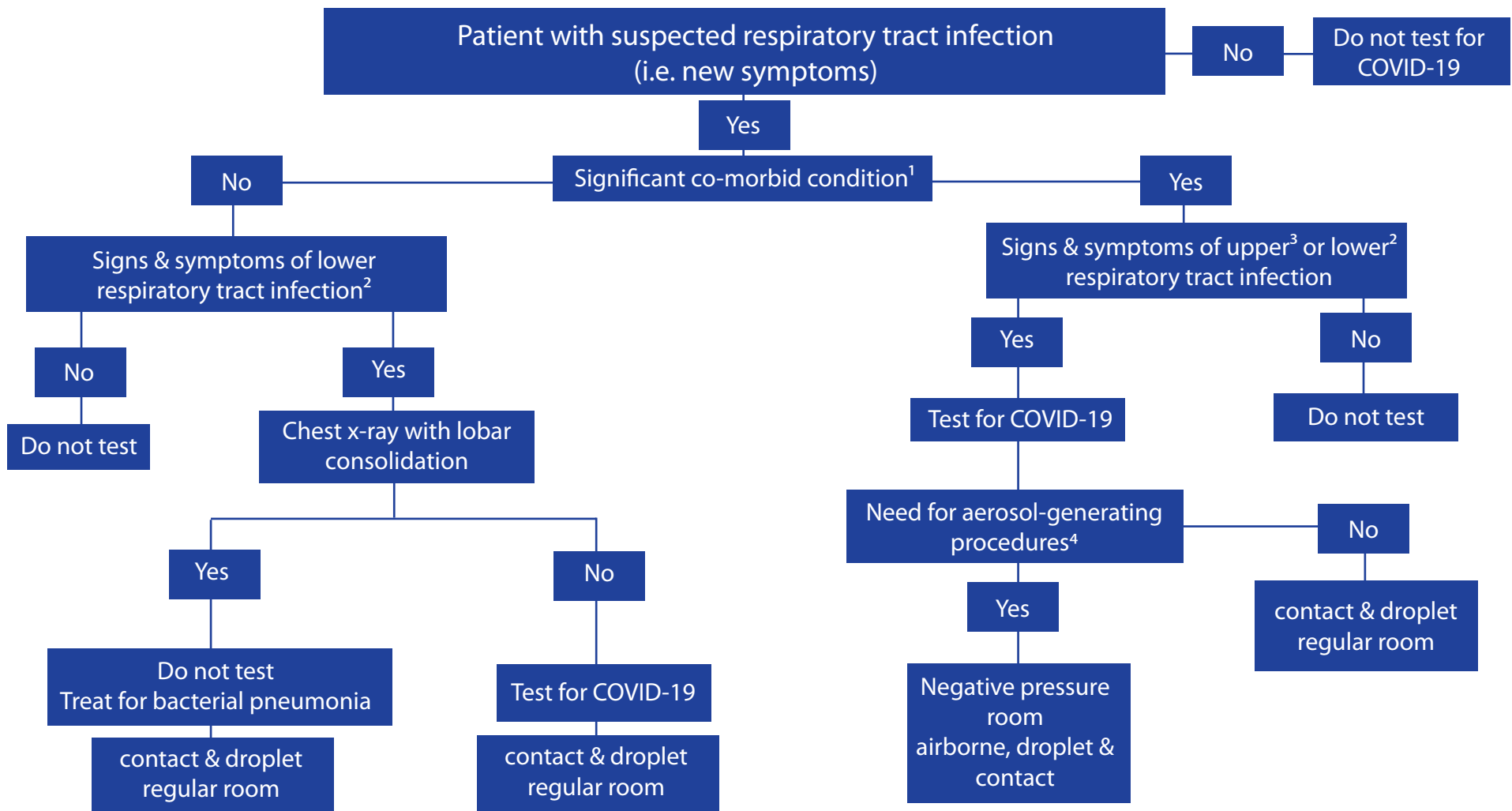


# COVID-19 Inpatient Testing Algorithm



<sup>1</sup>Immunocompromised, e.g. transplant, IBD, rheumatology; cystic fibrosis, other primary lung disease excluding asthma, including chronic lung disease of prematurity (neuromuscular diseases, e.g. cerebral palsy); tracheostomy or other disorder with airway clearance issue; diabetes; hemodynamically significant heart disease including heart failure

<sup>2</sup>Fever, cough, shortness of breath/increased work of breathing (need two of three)

<sup>3</sup>Nasal congestion, sore throat

<sup>4</sup>Procedures that stimulate coughing and promote generation of aerosols, including aerosolized or nebulized medication administration, diagnostic sputum induction, bronchoscopy, airway suctioning, endotracheal intubation, positive pressure ventilation via face mask (CPAP, BiPAP) and high frequency oscillatory ventilation